

KAN XL/XXL

Tracheostomy tubes



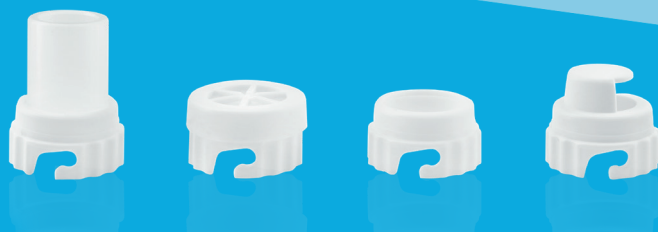
NEW



Tracheostomy tube KAN XL/XXL  
with inner cannula, fenestrated



Tracheostomy tube KAN XL/XXL  
with inner cannula, non-fenestrated



accessories

## Advantages:

Perfectly matched, **taper shaped** inner cannulas.

Smooth, rounded and atraumatic **distal end**.

Taper shaped tube narrowing towards its distal end, made of thermosensitive medical **PVC**.

**Bayonet joints** facilitate easy and safe mounting of inner cannula.

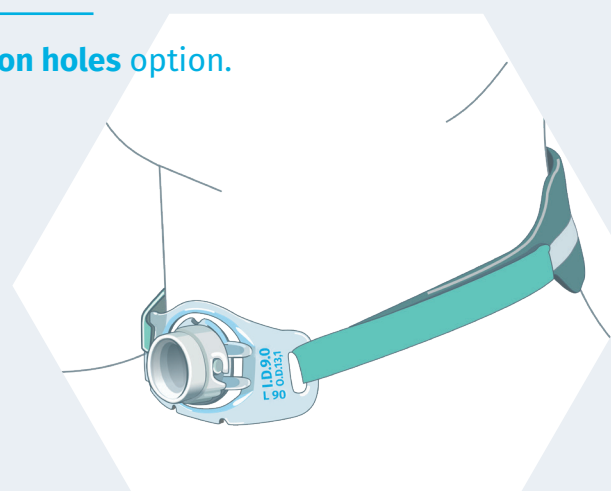
15 mm **connector** according to ISO standards.

Connecting plugs.

**Soft flange** with joint hitch ensures comfort during head motions,

- flexible in all directions,
- letter coding,
- colour coded according to size,
- transparent allows visualization of the underline skin and stoma site.

Circular **fenestration holes** option.



## Tube sizes:

Size I.D. [mm]	Tube O.D. [mm]	Cannula I.D. [mm]	Tube I.D. [mm]	Length XL [mm]	Ref. number XL		Length XXL [mm]	Ref. number XXL	
					without fenestration	with fenestration		without fenestration	with fenestration
5,0	9,1	5,0	6,5	70	46-5000	46-5010	85	46-5020	46-5030
6,0	10,2	6,0	7,5	80	46-6000	46-6010	93	46-6020	46-6030
7,0	11,2	7,0	8,5	83	46-7000	46-7010	100	46-7020	46-7030
8,0	12,2	8,0	9,5	87	46-8000	46-8010	105	46-8020	46-8030
9,0	13,1	9,0	10,5	90	46-9000	46-9010	110	46-9020	46-9030
10,0	14,3	10,0	11,5	92	46-1000	46-1010	115	46-1020	46-1030

